



MONTHLY MEMBERSHIP PROGRESS REPORT

District 27 E2

Results as of: 06/30/2018

GMT: MICHAEL MOLEND A

LOCATION WISCONSIN

GMT CA

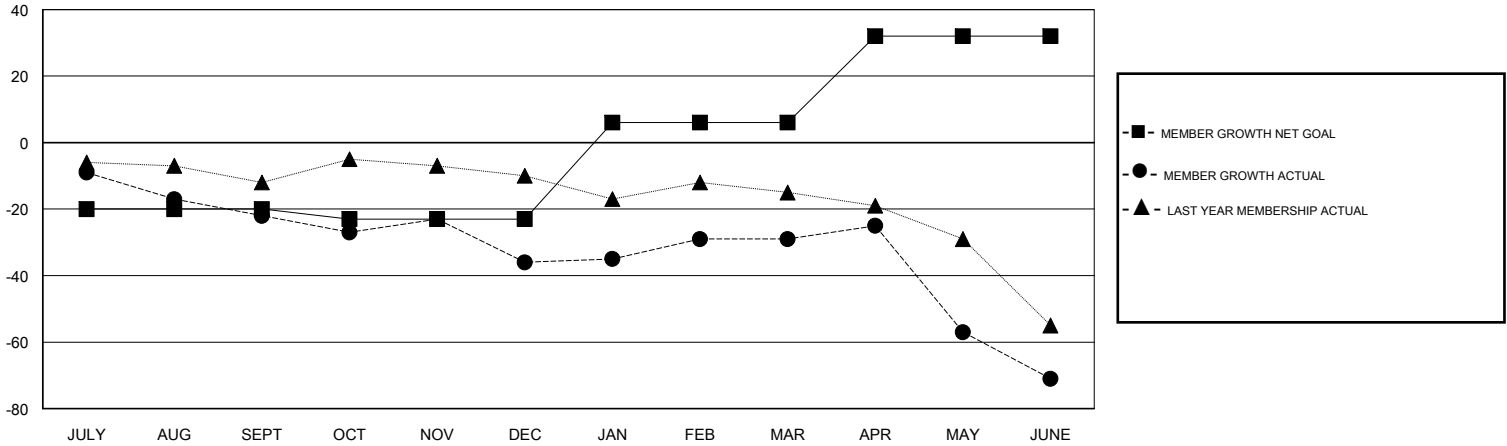
Clubs			
RESULTS FOR 2017-2018			
QUARTER	NEW CLUB GOAL	NEW CLUBS	DROPPED CLUBS
JULY/AUG/SEPT	0	0	0
OCT/NOV/DEC	0	0	0
JAN/FEB/MAR	1	0	0
APR/MAY/JUNE	0	0	0

Members			
RESULTS FOR 2017-2018			
QUARTER	MEMBER GROWTH NET GOAL	MEMBER GROWTH ACTUAL	DROPPED MEMBERS ACTUAL (including transfers)
JULY/AUG/SEPT	-20	29	36
OCT/NOV/DEC	-3	31	45
JAN/FEB/MAR	29	38	30
APR/MAY/JUNE	26	42	77

GOALS AND ACTUAL NEW CLUBS CUMULATIVE



GOALS AND ACTUAL MEMBERS CUMULATIVE



DROPPED CLUBS: 0	27 CLUBS OF 46 ADDED 1 OR MORE NEW MEMBERS	<u>GENDER DISTRIBUTION</u>	
DROPPED MEMBERS		MALE	1,300 (77.75%)
DECEASED	23	FEMALE	372 (22.25%)
CLUB CANCELLED	0	Women Percentage Fiscal Year Goal: 22%	
OTHER	165	TOTAL FAMILY UNIT MEMBERS	0
TOTAL	188	FAMILY MEMBERS PAYING HALF DUES	0

[CLICK HERE FOR CUMULATIVE MEMBERSHIP DATA](#)